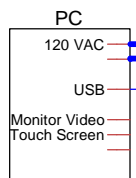
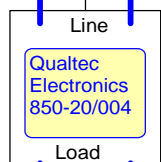
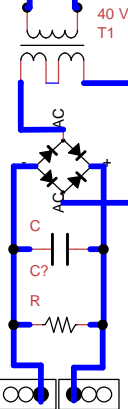
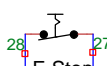
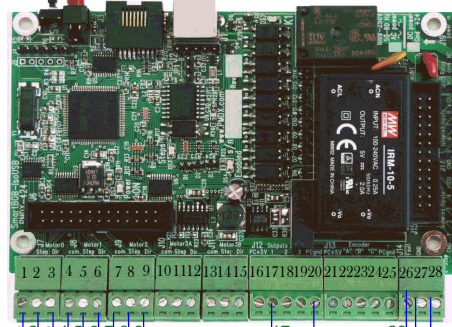


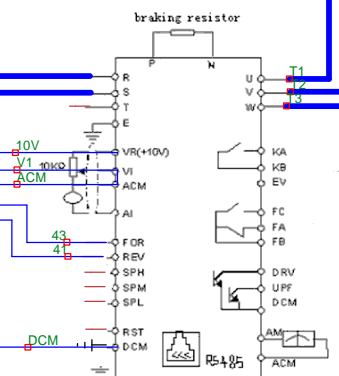
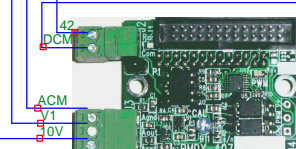
Neutral 120VAC 120VAC



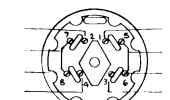
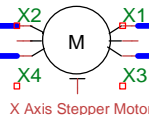
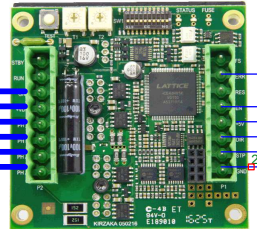
PMDX - 4 2 4 Motion Control Board



PMDX - 407 Spindle Control Daughter Board

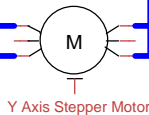
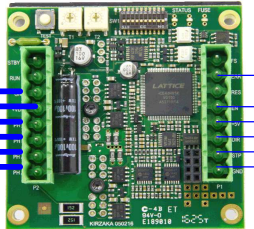


X Axis, GeckoDrive G214v



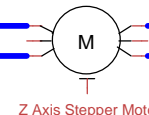
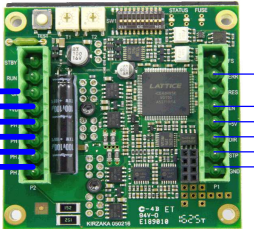
Sigma Stepper Wiring

Y Axis, GeckoDrive G214v



Y Axis Stepper Motor

Z Axis, GeckoDrive G214v

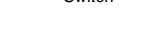


Z Axis Stepper Motor

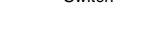
X Home / Limit Switch



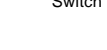
Y Home / Limit Switch



Z Plus Limit/Home Switch



Z Minus Limit Switch



Title		
Bridgeport Series I CNC Controller Retrofit Wiring Diagram		
Author		
Richard Gehweiler		
Organisation - None What So Ever		
File	Document	
uments\Bridgeport CNC Retrofit Wiring Diagram		
Revision	Date	Sheets
1.0	2.3.17	1 of 1